



# MEGHALAYA

*Backpacking* **5N/6D**



**CHRISTMAS BATCH**

**BATCH 1: 20 DEC (EVE) TO 25 DEC (MOR)**

**NEW YEAR BATCH**

**BATCH 3: 27 DEC (EVE) TO 01 JAN (MOR)**

+91 8287828267 | 8287586228

[www.enlivetrips.com](http://www.enlivetrips.com)

# TABLE OF *Contents*



Click to  
Navigate

- [01](#) Brief Itinerary
- [02](#) Detailed Itinerary
- [03](#) Inclusions
- [04](#) Exclusions
- [05](#) Our Stay
- [06](#) Costing
- [07](#) Social Media Handles
- [08](#) Booking Process
- [09](#) Payment Policy
- [10](#) Trip Dates
- [11](#) Things to Carry
- [12](#) Cancellation Policy
- [13](#) Terms & Conditions



# 06 DAYS

Guwahati to Guwahati

## *Brief Itinerary*

### ▶ DAY 1

Guwahati Arrival | Umiam Lake |  
Overnight At Shillong

### ▶ DAY 2

Shillong to Cherrapunjee |  
Lyngksiar Waterfalls | Arwah Cave  
| Nohkalikai Falls

### ▶ DAY 3

Single Root Bridge | Double  
Decker Bridge

### ▶ DAY 4

Mawsmai Caves | Nohkalikai  
Waterfall | Mawlynnong Village |  
Overnight At Shnongpdeng

### ▶ DAY 5

Water Sports | Krang Suri Waterfall |  
Overnight At Shillong

### ▶ DAY 6

Laitlum Grand Canyon | Departure



# DETAILED *Itinerary*



## **Day 1:** Guwahati Arrival | Umiam Lake | Overnight At Shillong

- ▶ Arrive at **Lokpriya Gopinath Bordoloi International Airport** by morning. Arrive till 11:00 AM Post breakfast, depart for Shillong.
- ▶ Post lunch visits **Umiam Lake** & then head to **Shillong market** for some shopping.
- ▶ Check in to the hotel & freshen up.
- ▶ Overnight stay at Shillong.



## **Day 2:** Shillong to Cherrapunjee | Lyngksiar Waterfalls | Arwah Cave | Nohkalikai Falls

- ▶ Wake up and enjoy your breakfast with a view.
- ▶ Check out from hotel and visit **the beautiful Lyngksiar Waterfalls.**
- ▶ Later depart for **Arwah Cave.**
- ▶ Spend your time awestruck by the amazing beauty.
- ▶ Post lunch continue toward **Cherrapunjee.**
- ▶ Reach Cherrapunjee and visit **Nohkalikai Falls.**
- ▶ Check in to the resort and Relax in the evening.
- ▶ Dinner & sleep overnight.



## Day 3: Single Root Bridge | Double Decker Bridge

- ▶ Post breakfast, depart for **Tyrna Village**.
- ▶ Reach Tyrna & first start your trek to the **Single Root Bridge**.
- ▶ Later Visit **the astonishing Double Decker Bridge**. Trek back to Tyrna Village & start your journey to Cherrapunjee. ( This trek consists of 3300 steps one side, a total of 6600 steps in the entire trek )
- ▶ Reach Cherrapunjee.
- ▶ Overnight stay at Cherrapunjee.



## Day 4: Mawsmat Caves | Nohkalikai Waterfall | Mawlynnong Village | Overnight At Shnongpdeng

- ▶ Post breakfast, Visit **Mawsmat Caves** and **Nohkalikai Falls**.
- ▶ Transfer to **Mawlynnong Village**.
- ▶ Later transfer to **Shnongpdeng Village**.
- ▶ Arrive at **Shnongpdeng** & check in to the camps. Camping by the **crystal clear Umngot river** which is also known as **Dawki river**.
- ▶ Overnight stay at Shnongpdeng.



## **Day 5:** Water Sports | Krang Suri Waterfall | Overnight At Shillong

- ▶ Enjoy your breakfast with a sight of crystal clear water of the river.
- ▶ Enjoy various **water sports activities**.
- ▶ Have your lunch and transfer to Shillong.
- ▶ On the way visit **Krang Suri Waterfall**.
- ▶ Reach Shillong & explore the local market.
- ▶ Overnight stay at Shillong.



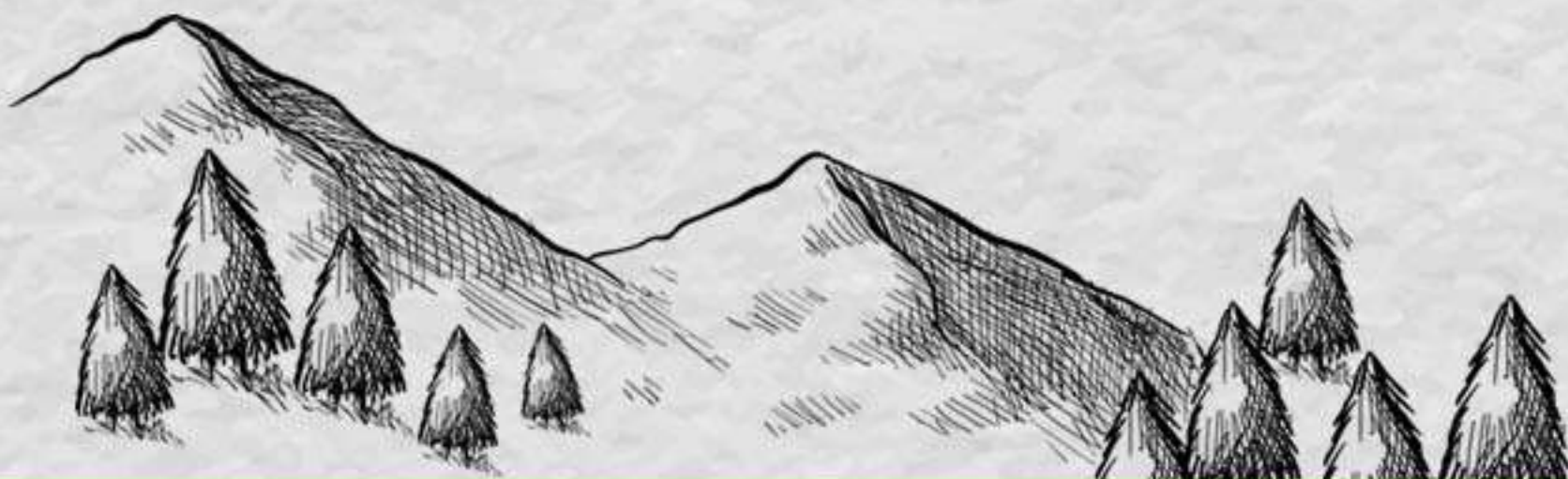
## Day 6: Laitlum Grand Canyon I Departure

- ▶ Enjoy a delicious breakfast.
- ▶ Check out and depart for **Laitlum Grand Canyon**.
- ▶ Depart for **Guwahati Airport**.
- ▶ Reach your home with a suitcase **full of memories**. Book your flight post 5 PM.

# INCLUSIONS

---

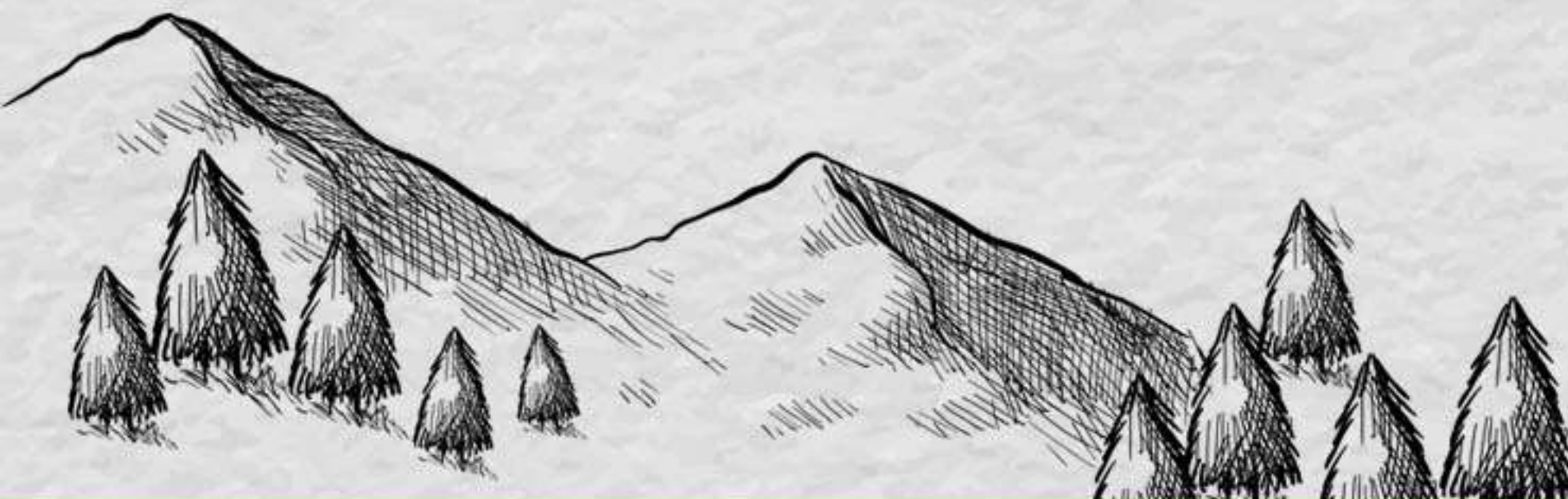
- ✓ Entire travel as per the itinerary by tempo traveler/ SUV.
- ✓ 5 nights accommodation – 2 Nights in Hotel at Cherrapunjee, 1 Night in Camps at Shnongpdeng & 2 Nights in Hotel at Shillong on double/triple sharing basis
- ✓ 6 meals – Breakfast on Day 2, Day 3, Day 4, Day 5 & Day 6 + Dinner on Day 4
- ✓ Entry fees to the sightseeing places mentioned in the itinerary.
- ✓ Guided trek to various points.
- ✓ Team Captain throughout the trip
- ✓ Medical Kit to handle emergency conditions
- ✓ Driver night charges, toll & parking charges
- ✓ All inner line permits
- ✓ Boating in Shnongpdeng
- ✓ Bonfire ( If Weather permits )



# EXCLUSIONS

---

- ✘ GST (5%) is applicable extra.
- ✘ Any other food or beverage charges that are not included in the package.
- ✘ Any other costing involved due to any kind of natural calamity, forced circumstances, which are out of our control.
- ✘ Any other expense not mentioned in the inclusion column.



# COSTING

## *Per Person*

**Double Sharing: ₹21,999 + 5% GST**

**Triple Sharing: ₹19,999 + 5% GST**

**Note:** 1. Prices will be on little higher side for Special Weekend batches.

2. Travellers residing outside Guwahati are advised to book trains/flights to reach Guwahati before 12 noon on the date of commencement of journey. Similarly, book return flight/train departure after 6 PM on the date of completion of journey respectively.

**CONNECT WITH US**



VISIT OUR SOCIAL MEDIA HANDLES BY CLICKING ANY OF THE ABOVE ICONS



# BOOKING *Process*

BOOKING AMOUNT: ₹5,000/- PER PERSON

BALANCE AMOUNT TO BE PAID 7 DAY BEFORE BOARDING.

NAME: ENLIVE TRIP EXPERIENCES PVT LTD

BANK NAME: IDFC FIRST

A/C NO: 10101996386

IFSC CODE: IDFB0020139

BRANCH: MALVIYA NAGAR



UPI TRANSFER & SCAN

 Pay 9899790488

 9899790488

 PhonePe 9899790488

 enlivetrips@upi



SCAN & PAY

# THINGS *to carry*

- Day backpack (20-30 ltr.)
- Sunscreen (SPF 40+)
- Floaters or Sandals
- Water bottle 1 Ltr
- 1 Down Jacket / Main Jacket
- Bag for all your Toiletries
- Outdoor Shoes
- Personal basic medical kit
- 3 Quick Dry Tees
- Mobile charger / Powe bank
- Cold Cream
- 3 Pair of Cotton Socks
- Documents
- Quick dry towel
- Travel laundry bag
- Sanitizer
- Camera
- Sun cap
- Lip Balm
- Sunglasses / People who use spectacles (Use Photochromic glasses instead of contact lenses)





# CANCELLATION

## *Policy*

- Free Cancellation up to 60 days before the departure date (Booking amount is non-refundable)
- If you're canceling the trip and opting for a refund within 59 days to 45 days of the Departure Date then only 10% of the total trip cost (calculated after subtracting the booking amount) along with the booking amount (non-refundable) will be charged as a cancellation fee and remaining sum would be refunded.
- If you're canceling the trip and opting for a refund within 44 Days to 30 Days of the Departure Date then only 25% of the total trip cost (calculated after subtracting the booking amount) along with the booking amount (non-refundable) will be charged as a cancellation fee and remaining sum would be refunded.
- If you're canceling the trip and opting for a refund within 29 Days to 15 Days of the Departure Date then only 50% of the total trip cost (calculated after subtracting the booking amount) along with the booking amount (non-refundable) will be charged as a cancellation fee and remaining sum would be refunded.
- If you're canceling the trip and opting for a refund within 15 Days to 8 Days of the Departure Date then only 75% of the total trip cost (calculated after subtracting the booking amount) along with the booking amount (non-refundable) will be charged as a cancellation fee and remaining sum would be refunded.
- If you're canceling the trip and opting for a refund within 7 Days from the Departure Date then 100% of the total trip cost (calculated after subtracting the booking amount) along with the booking amount (non-refundable) will be charged as a cancellation fee and remaining sum would be refunded. You are not applicable for a refund if you fail to show up on the day of departure under the given timeline that has been provided to you beforehand.

- If you're canceling the trip and opting for a refund within 7 Days from the Departure Date then 100% of the total trip cost (calculated after subtracting the booking amount) along with the booking amount (non-refundable) will be charged as a cancellation fee and remaining sum would be refunded. You are not applicable for a refund if you fail to show up on the day of departure under the given timeline that has been provided to you beforehand.
- There would be no refund provided in case there occur some problems due to government orders, harsh weather conditions, protests, landslides, or any other unforeseen circumstances. On the occasion of any such happenings, we have a backup plan ready most of the time and we'll be moving onto that.
- There are times when we would have to cancel some activities mentioned in the itinerary but it's only due to the reason that we would be bound by a circumstance that is not in our control.
- If a trek is called off at the last moment due to a natural calamity/unforeseen circumstances (like rain, snowfall, earthquake, landslides, strike, bandh, etc.) then the participants would be provided with a travel voucher for the same amount that can be used within 365 days of the issuance date for any package worth the same amount.
- If a trek/trip has to be aborted midway due to a natural calamity/unforeseen circumstances (like rain, snowfall, earthquake, landslides, strike, bandh, etc). In that case, no refund would be provided.
- EnLive Trips will not bear any extra expense due to any natural calamity/unforeseen circumstances (like rain, snowfall, earthquake, landslides, strike, bandh, etc).
- Cancellations policy differs for popular destinations and also during peak season, kindly confirm with your operator once.



# TERMS & CONDITIONS

- A travel batch will be confirmed and dispatched only if the minimum number of participants is 10 or more, or if otherwise decided by the company.
- Vouchers are non-transferable and valid only for the services mentioned herein.
- Any services not specifically requested, confirmed and noted on vouchers will not be rendered.
- All extras are to be paid directly to the hotels/the service providers.
- Travelers must take care of their luggage & belongings. The management shall not be accountable for missing items along the tour.
- As you journey through the scenic hills, the air conditioning will be turned off to ensure a smooth & safe ride.
- Please stick to itinerary, anything extra shall be chargeable (at the location itself.)
- Any service unused is non-refundable.
- During the transit in tempo traveller/ bus , consuming alcohol is prohibited. If seen consuming alcohol trip captain can take action accordingly.
- Please note that due to weather, social condition or participants Physical abilities, itineraries may need to be adjusted for safety, comfort and well-being. We kindly ask for your understanding as we reserve the right to amend schedules. Incase of severe weather, heavy rainfall or snowfall, guests will be responsible for any extra vehicle & stay expenses. Enlive Trip appreciates your co-operation and is not liable for these circumstances.
- Cancellations policy differs for popular destinations and also during peak season, kindly confirm with your operator once.
- The company shall not be liable for damages/charges incurred by travelers if any of the following reasons apply:
  - Natural disaster, war, civil unrest, and alteration or cancellation of tour itinerary due to such causes.
  - Accidents during transportation or accommodations, damage by fire.
  - Orders of either Indian governments or immigration regulations, isolation resulting from infectious diseases, and tour itinerary alteration or cancellation owing to such causes.
  - Accidents occurring during the travelers free activities.
  - Food poisoning.
  - Theft.
- Payment of the booking amount shall be deemed as the customer's acceptance of the terms and conditions outlined in the itinerary.

**For Queries Call Us At +91 8287586228 / 8287828267**